

---

## Contents

---

<b>Title</b>	<b>Author</b>	<b>Page</b>
<b>Articles</b>		
Apple Pressing Day	David Thomas	20
Namaste Nepal!	Sue and Tony Jordan	4
Playground Update	Alex de Giorgio-Miller	3
Reach Expedition Scales Mont Blanc	Ross Clark	8
Bottisham and Burwell Photographic Club	Daphne Hanson	12
Bottisham Village College Adult Learning		18
Burwell and Reach Car Scheme		7
Burwell Museum		12
Burwell Museum Coach Trips		13
Bus Timetable		34
Cambridgeshire Fire and Rescue		13
<b>Church</b>		
Church Services and Events		33
Church Update	Pat Chalmers	23
Christingle		22
Letter from the Vicarage	Eleanor Williams	22
Contact Information		36
Diary Dates		35
Crossword		30
Events Team	Debbie Quilter	10
Reach's got Talent	Mini Events Team	31
Family Focus	Tasha Bridgeman	18
Food Focus	Catherine Gibson	21
From the Editor	David Parr	2
Health		31
IT Advice	David Macmillan	6
Jobs		29
Out and About	Joss Goodchild	14
<b>Parish Council</b>		
Grant Fund		23
Know Your Parish Council		23
Meeting Minutes		24
Pets Corner		16
Rosanna's Ramblings	Rosanna Moseley Gore	11
<b>Sport and Recreation</b>		
Burwell Bowls		21
Reach Riders		22
Swaffham Prior Gardeners		15
Swaffham Prior Parochial Charities	Pam Waters	7
Swaffham Prior School	Helen Bartley	9
Tales from a Reach Garden	Danuta Gibson	19
Then and Now	Chris Patterson	36
Whats Growing on at Snakehall Farm	Maz Baker	17
Wicken Fen and Anglesey Abbey News	Julia Hammond	16

---

## From the Editor

---

It's been a busy month!

With the highlight, I think, being the way the village celebrated the 100<sup>th</sup> Anniversary of the end of the 1<sup>st</sup> World War. The service at the war memorial and in the church, followed by the exhibition in the church and the poetry reading and culminating in the nostalgic music culminating with the superb rendition of the Last Post – all were lovely.



Our village truly does have talent.

Which leads me nicely on to an event in February being put together by the Mini Events Team called "Reach's got Talent". This will be their first event and you can get more information on it by going to page 31.

We also have excellent articles from our Nepal travellers, Sue and Tony Jordan and our legendary mountaineers, Ross Clark and Ewen Cameron.

And we have a new contributor in Chris Patterson with his article "Now and Then". He looks back at photographs from the past and with the help of Tony Kohlman and his drone, is able to show us how Reach has evolved over the years.

I hope you enjoy this issue – and if you have any thoughts or comments on the contents, please let me know.

Finally, may I take this opportunity to wish you all a very Merry Christmas and a Happy New Year.

**David Parr**

davidmparr@btinternet.com or 07887 563720



---

## About the Magazine

---

The purpose of *Within Reach* is to serve the whole village by circulating information and interesting articles free to every household. Additional copies are available at a charge of £2.50. Issues are published bi-monthly covering the months of Feb/Mar, Apr/May, June/July, Aug/Sept, Oct/Nov and Dec/Jan.

Copies of the Minutes of Parish Council meetings and of *Out of Reach* and *Within Reach* magazines can be found on the village website [www.reach-village.co.uk](http://www.reach-village.co.uk).

The next copy date is 15<sup>th</sup> January 2019. This magazine is approved and printed by Reach Parish Council.

---

## Our Team

---

<b>Acting Editor</b>	David Parr
<b>Production</b>	David Parr
<b>Advertising/Treasurer</b>	David Parr
<b>Distribution</b>	Freda Lloyd and Grahame Radford
<b>Photographer</b>	Rosanna Moseley Gore
<b>24Acres</b>	David Thomas
<b>Cookery</b>	Catherine Gibson
<b>Cricket</b>	Ross Clark
<b>Events Team</b>	Debbie Quilter
<b>Family Focus</b>	Tasha Bridgeman
<b>Fen Chitchat</b>	Lesley Boyle
<b>Gardening</b>	Danuta Gibson
<b>IT Advice</b>	David Macmillan
<b>Parish Council</b>	Susan Bailey
<b>Reach Riders Group</b>	Sue Cameron
<b>Rosanna's Ramblings</b>	Rosanna Moseley Gore
<b>Snakehall Farm</b>	Maz Baker
<b>Swaffham Prior School</b>	Helen Bartley
<b>Then and Now</b>	Chris Patterson
<b>Thought for the Day</b>	Krysia Newman
<b>Wicken Fen</b>	Julie Hammond
<b>Wildlife</b>	Joss Goodchild

---

## Playground Update

---

Many of you will remember – and will have been grateful for on long afternoons in the old playground, the memorial bench dedicated to Albert Johnson. With the arrival of the new playground and the subsequent removal of the old playground, Albert's bench has been on the move.



It was repaired and resituated in its new spot in the new playground by our contractor, and last month the Parish Council commissioned local boys, Dylan and Harry, with the task of restoring it. I think you'll agree, they've done Albert proud.



The development of the old playground area is still in the funding stages. Working with the Reach Village Centre Committee on this project, we have submitted various applications for small grants to cover the redevelopment work.

I'm pleased to report that one of our funding applications has been successful and we're in the customer vote for a Bags of Help grant from Tesco.

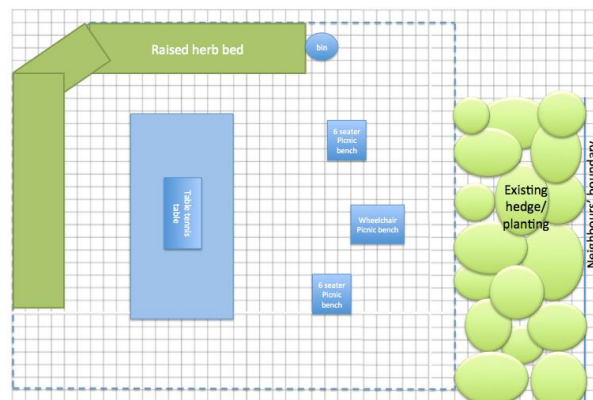


## Bags of Help

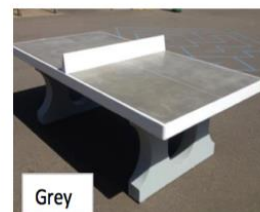
It's a scheme which gives community projects like us grants of up to £4,000 – all raised from the sale of carrier bags in Tesco stores. The public will now vote in store during January and February 2019 on who should receive the awards. Please support us by voting with your blue tokens in the Tesco Newmarket store!

The funding we receive will go towards the development plans for the old playground area and new benches in the new playground if we get sufficient funding.

We're also through to the second round in the Postcode Local Trust application process, and, if successful, we would have enough funding for the project to begin in the new year. We should know the outcome of this by the end of November – so fingers crossed!



Working with the gardening team at Prospect's Trust, there will be a raised bed along the outside edge of the old playground area, maintaining the restricted access on to the field. We are looking at some seating and a step up on this raised bed so that children can use the bed to grow their own plants. The planting would be a combination of plants to encourage native wildlife, and herbs which could be tended by and used by residents. Anyone with a keen interest in gardening who would like to be involved, please do get in touch – thank you to those who have already!



Inside the area created by this raised bed, we plan to install three picnic tables, one with extended ends for wheelchair use and a concrete table tennis table.

Hopefully by the next issue we will be able to share the finalised plans and timelines!

**Alex de Giorgio-Miller**

Play Spaces Officer – Reach Parish Council  
[a.degiorgiomiller@reachparishcouncil.org](mailto:a.degiorgiomiller@reachparishcouncil.org)



---

## Namaste Nepal!

---

Strange how sometimes things evolve and take on a life of their own! A cup of coffee, a nostalgic reminiscence with old friends about trekking in Kyrgyzstan and a wistful desire for us all to see the Himalayas again and suddenly a trip to Nepal in October 2018 was in the making.

Seven old friends (all in our sixties and with various dodgy joints) completed a 12 day trekking and camping expedition to the Ganesh Himal on the Nepalese/Tibetan border. Although mostly at lower altitude than we have all trekked before, it was still quite a challenging trek involving many steep ascents and descents as we crossed mountain ranges and dropped to valley floors.

Hot, steamy daytime weather gave way to frosty, starry nights where our dining tent and little yellow sleeping pods were cosy havens. However, our rewards were many; stunning mountain scenery, friendly villagers in tiny remote farming communities, singing and dancing games with the children (who knew the Hokey Cokey could be so universal?) and so much more.



For Tony and me our expedition aim was twofold. Firstly, we wanted to re-visit a country which we had fallen in love with while trekking near the Annapurna region in 2014. Secondly, to visit a school we have supported since the dreadful earthquake of 2015 when so much damage was inflicted on the people, the villages and cities and on the historical cultural heritage of Nepal.



The school is only a relatively short distance from the capital, Kathmandu, but the practicalities of us getting to it proved in the end to be impossible. We would have had to make a twenty hour road trip in a 4 x4 along some very difficult roads for what would have been a 2 hour visit, accompanied by staff from the charity as a necessary child protection policy. In addition, Nepalese schools close for about a month for various festivities during late October and early November so this plan A was unworkable.

Our plan B was to make a three day stay in a remote village in the Langtang region after we had said a fond farewell to our fellow trekkers. We hoped to do some simple volunteering in village projects and to live and share the lifestyle with a local family, but as so often happens when one travels the best laid plans often need some amending!

It felt very strange to be saying goodbye to the security and familiarity of our friends and our trekking support team of 1 Sirdar (leader), 3 Sherpas (guides) and a team of porters and cooks and to find ourselves alone in a small-town hotel. However, as pre-arranged, we met up with our Nepalese host, Dawa Lama, who fortunately spoke excellent English.



**Dawa and Family**

It was a steep and hot climb to Dawa's village of Bridim, which was to be our base for the next three days. Bridim is in the west of the Langtang trekking region and sadly, this was one of the worst hit areas in the 2015 earthquake. Bridim, a small village on the slopes of the mighty Langtang Peak itself (7234m), escaped the devastating avalanches further up the valley but was very badly shaken. All the buildings except for one were either totally destroyed or very badly damaged; the one remaining building belongs to Dawa's family and is now the only representative of a traditional wooden Tibetan style 'chalet' in the village. We were expecting to stay here, but with many apologies Dawa explained that he still has no bathroom facilities. Dawa and his wife, two very young children and his mother share the small house.



**Reading to Dawa's Daughter**

The ground floor is for animals and storage and outside wooden steps lead to a balcony, a central room for living, dining and cooking with a 'Tibetan fireplace' for heating and cooking and with a bed for his mother and one further room for the rest of the family. It was in the warm and cosy living room we shared our gifts for the family, drank sweet yak butter tea and ate an amazing evening meal of dried buffalo meat and vegetable stew cooked by Dawas's wife on the open fire. Dawas's daughter danced by the fire, the baby slept in its bamboo crib, Grandma hummed Buddhist chants and other family members spoke of their lives split between hotel management in Kathmandu and helping with the harvest in Bridim.

The plan to help or at least visit the village school was no longer possible as the school has been badly damaged by the earthquake, and, unlike many other villages we visited, there are no plans to re-open it. The village population is falling and too few children remain. The Village Help Centre has been rebuilt and there are now new 'roads' (dusty, potholed tracks suitable for rugged motorbikes and villagers and trekkers on foot) scraped out of the mountain side. These tracks brought vital aid and building materials quickly to the stricken areas. Other village projects which had been suggested prior to leaving the UK were also not running so our volunteering was strictly limited by circumstance.

However, we very much enjoyed exploring Bridim, meeting villagers, watching the small water mill in action (6 hours to grind a very small bag of corn), looking at the water-driven prayer wheels and visiting the newly built gumpa (Buddhist Monastery). The gumpa is still waiting for final painting and for the interior furnishings to be completed before it is fully operational; meanwhile a temporary gumpa is still used by the villagers. We saw old school benches, beautiful carved wooden furniture and window frames covered and stacked ready for new uses and homes. We helped (!) with some farming for Dawa - Tony can now add ploughing with oxen and a wooden plough to his CV and I can add potato harvesting to mine. We shared freshly roasted spicy potatoes with our co-workers in the field but declined the local rice firewater!

We stayed in a local 'homestay' which is the Nepalese equivalent of a family run Youth Hostel – and ours was very basic indeed. It is run by a couple of elderly Tibetans, who also run a small farm and have an extremely tough life. We soon discovered, however, that this homestay is very much the hub of the village with a small shop, locals dropping in and sharing food and drink around the fire and all the time making us feel very welcome and part of their community.



The future for Bridim will continue to rely on tourism and trekkers to bring much needed funds into the village economy; Dawa himself is building a beautiful new homestay next to his old family home. He hopes to open his old home as living museum to help keep alive some of the Tibetan traditions such as the stunning textiles, knitting and weavings that his mother and wife make and sell to visitors. David Parr had kindly given us some beautiful photos, calendars and bags from Reach and I had prepared some scrapbooks. These were intended go to the village school but they will now take pride of place in the 'library' in Dawas' new homestay so hopefully pictures of Reach will be seen by visitors from around the world.

Just enough space to write a little about Plan C! On our return to Kathmandu after some yoga and meditation in the hills, we met up with staff from the charity Plan International who help establish schools, self-help projects, occupational training in disadvantaged communities throughout the world.



They kindly arranged a visit to a school where 25% of the students have extra physical disability or learning needs and 75% come from children from a deprived area of Kathmandu.



It was very humbling but satisfying to see the work of Plan International, which is supported so many people throughout the world, in action. We send our thoughts and love to the people of Nepal who have touched our lives in so many ways.

**Namaste Nepal!**

**Sue and Tony Jordan**

**Links:**

<https://plan-uk.org/> Plan International UK

<https://www.bbc.co.uk/news/av/world-asia-32585356/nepal-earthquake-worst-affected-village-of-langtang>

<https://www.markhorrell.com/blog/2017/the-fate-of-langtang-village-two-years-after-the-nepal-earthquake/>

---

## IT Advice

---

Hello again.

If you have persevered with me so far you have a computer or tablet which is well backed up and protected with secure passwords, so I will now proceed to discussing anti-virus programs. These are like insurance, in that you hope you never need them, but it's no good buying after the event.



If you have a Mac please read on, whatever you have been told or read Macs do suffer virus infections, I know because I have removed them! Macs are expensive, so their users are attractive to criminal hackers and don't forget your smartphones and tablets. More than half of online banking is done from these, so they are also attractive to criminals.



There are a number of free anti-virus programs, these are reasonably effective but suffer from advertising pop-ups and exhortations to buy the paid-for versions. Windows Defender is included with Windows 10 and is getting better all the time. Microsoft have a huge budget devoted to virus protection so if you only use your computer for light domestic work on trusted websites and don't indulge in online banking it is fine. Sometimes your bank or Internet provider will supply anti-virus at no charge.

Now we get to pay for programs: They have additional protection for sensitive online activity like banking and browsing, also they often provide additional tools e.g. for improving computer performance and a password management program. They are mostly very good, but sometimes they slow down old or low-powered devices dramatically because of their demand on the system. The most economical way to buy anti-virus protection is a licence covering all your family's devices.

Let's be clear, no one program will protect against every infection, but you can't have more than one anti-virus running at any one time. If I get an infected device to clean, I scan it with three or four different programs to remove everything I can find.

There is a problem with "Potentially Unwanted Programs" which are not illegal in themselves but can be used by criminals to access your computer. They are often included with programs that pop-up and offer to "clean your registry" or "check and update drivers" or come in with spoof emails. Do not install these programs unless you trust them.

It is no good installing the latest whizz-bang anti-virus if you do not give it the chance to work. It needs to be allowed to update its "virus definitions" automatically and there is normally the choice of setting a regular scan. This gives the software a chance to find vulnerabilities which it learned about after they got on your computer. If you think you have an infection then make sure your anti-virus and computer are updated, then manually start a full scan which may take some time, then follow the on-screen instructions.

Lastly, remember that it is almost impossible for anti-virus programs to protect you against viruses introduced by spoof emails pretending to be a bank, government authority, delivery firm etc. Pictures, PDF's and .zip files are particularly dangerous, only open them if you are sure of the source. If you receive an email from anybody about account security details or something similar it is much better to access the account holder's website directly rather than clicking on a link in the email to your account. Fraudsters have become very adept at mimicking genuine websites and you could be fooled into giving passwords or verification data to criminals.

**David McMillan**  
741259

## Burwell and Reach Car Scheme



If you are unable to use conventional transport, the scheme can help you to travel from Burwell or Reach to Doctors, Dentists, Chiropodists, Opticians, Village Shopping or Visits to Friends/Relatives at home or in hospital

Transport cannot be provided for Hospital Outpatient Appointments

Contact Hours are 8.30am to 5.00pm, Monday to Friday – please give us 48 hours' notice

01638 742543 (answerphone) and you will be contacted after you have left your request for transport

---

## Swaffham Prior Parochial Charities

---

Once again, the time has come to remind anyone who considers themselves, or knows someone who is, eligible for our Christmas Grant – please reply as soon as possible.

The majority of our applicants come from our state pensioners

If however you are in particular need or know of someone who may be in difficulty but are unlikely to apply on their own behalf the Trustees will always be happy to consider requests for assistance.

Applications should be sent to me or to any trustee and may I stress that assistance is available at all times not only at Christmas.

**Mrs Pam Waters** Clerk to the trustees, 01638 741035

---

## Home-Start Cambridgeshire's aim is for every child to have the best possible start in life

---



The charity supports families across the county who are going through difficult times. We are in an exciting period of change and are keen to appoint 2 Trustees who are passionate about supporting families with young children, keen to make a difference, creative and who enjoy being part of a team.

Both will be enthusiastic promoters of the charity and will be able to give time and energy to their role. Ideally one of them would have significant experience in HR.

Contact the office on 01480 700242 or email [office@homestartcambridgeshire.co.uk](mailto:office@homestartcambridgeshire.co.uk)

[www.homestartcambridgeshire.co.uk](http://www.homestartcambridgeshire.co.uk)

---

## Reach Expedition Scales Mont Blanc

---

The Reach expedition to scale Mont Blanc (232 years after it was first climbed) set out on 31st August, with team members Ross Clark and Ewen Cameron immediately taken out of their comfort zone into a traverse of some of the most remote parts of Eastern France.



One slip could have meant plunging down a steep slope into an unforgiving rockfall or black, swirling river. But that is enough about the drive to Chamonix.

When we got there, we found that we were staying in a rather agreeable chalet at the bottom of the Glacier des Bossons, which descends from the very peak to a point where it died out in a faint dribble 1,000 feet above our heads. Mont Blanc, at 15,777 feet, stands so high above the valley floor that the sun was still in sunlight when it was dark at the chalet. While Mont Blanc might be a tiddler compared with Mount Everest, being a little over half the height of the latter, it can claim to be one of the tallest mountains on Earth, being 13,000 feet above its identifiable base in the Chamonix valley.

We met our guide, Sandy and two other expedition members, Dylan, a civil engineer from Tooting and Paul, a plumber from Somerset who, flushed from the success of flogging David Cameron a new kitchen for his Cornish holiday home, had splashed out on what he said was his first holiday in 20 years. Others might have started with the Lake District or Wales, but not Paul – he had chosen an ascent of Mont Blanc, for which he said he had been training with 30 mile walks around Cheddar Gorge.

Before tackling Mont Blanc, we set out next morning for Gran Paradiso, which sounds like a seedy hotel in Naples but is in fact the highest peak wholly within Italy. As well as being a challenging climb in itself, the idea was to acclimatise ourselves to great altitude. There really isn't a lot of oxygen around about 10,000 feet – something to which the body has to adjust. By sleeping at around 9,000 feet for two nights and then ascending to the 13,323 summit of Gran Paradiso, we were supposed to be over our headaches and nausea by the time we reached Mont Blanc. With Dr Cameron, the team physician, on board what could possibly go wrong?

After a bivouac for the night (or rather a stay in a mountain hut which served three course meals and good wine) we started out at 6am for a long trek up a glacier, initially with the aid of headtorches. There is a purpose to the early start – the snow is harder earlier in the day and so safer. Why that matters soon became clear when we started having to cross great crevasses dozens of feet deep.

These are partially filled by snow, which allows them to be crossed easily, though there is always the possibility that the snow could collapse, taking a climber down with it. There are two defences against this danger. One is to be roped together and equipped with ice axes. This is not, in theory, a form of mutually-assured destruction – the idea is that if one member of the party takes the plunge the others, hopefully, can stuff their ice axes in the snow, arrest the poor sod's fall and then haul him out with the aid of a system of ropes and pulleys which I never quite got the hang of -- in spite of a training session down at Chamonix.

The second defence against plunging down a crevasse – in my case at least – is to weigh nine and a half stone and follow a team of portly Germans. If none of them went down, I reckoned, then neither would I. Three of us survived this stage of the climb. We all had throbbing heads by this stage but Paul was too out of puff to continue. In a reversal of the heroism of Captain Oates we gallantly left him behind on the glacier with the intention of picking him up on the way down. Seven hundred miles away in Cornwall, poor David Cameron had little idea of the threat to his kitchen installation.

The danger didn't quite end at the top of the glacier. We then had to scramble along a ridge where the footholds at one point narrowed to a few inches across – and without much in the way of handholds. It was a relief to fall into the arms of the Madonna who has been planted at the top.

We did indeed recover Paul on the way down but by the time we started on Mont Blanc two days later he was on his way home, having decided he needed a bit more work in the gym. He could have managed the first half of Mont Blanc, as it turned out, because we took a cable car and then a train up to Nid d'Aigle at 7,800 feet. To me that is cheating, but Sandy wouldn't have it any other way – that is what everyone did, to miss out the bottom half of the mountain. The railway was at one time intended to go all the way to the summit, though thankfully the Second World War intervened and construction was halted.



**Tete Rousse**

From Nid d'Aigle it was a rocky walk up to the Tete Rousse hut at 10,450 feet, which is surrounded by vast glaciers pristine at the top but grubby and black at the bottom where constant rockfalls have covered the ice.



The word 'hut' is a little misleading, given it is now a three story monstrosity with a restaurant and enormous bunk rooms. By now, the rest of the party had grown tired of my snoring and I was banished to an end bunk – though it then served them right when a German clambered into the intervening space and snored even louder than me.

Next morning, at 2.45 am, the real fun began. We roped up again and donned hard hats and crampons for the scramble up an intimidating 2,000 foot rockface in torchlight. It was rather surreal to be in an early morning commute with dozens of other climbers beginning even before the very first commuters set out along the M25. But there was again a good reason for the early start. We had to cross a gully called the Grand Couloir which, when the snow starts melting later in the day, can become a perilous rockfall. Two hours later we reached the Gouter hut at 12,700 ft. To the summit it was a laboured plod up the glacier in the ever-decreasing air – arguing all the way whether or not glacier ice smells of liquorice. I say it does, but no-one else would agree.



**At the Summit!**

Reader, we made it, but only just. We ended up summiting on the one day of the week when the clouds rolled in and there was significant snow. Another half hour and we may have had to turn back. I have known far colder, windier and downright hostile conditions in Scotland in winter however. Worse from my point of view was the altitude sickness, which left me light-headed and nauseous. What I had never previously understood was that altitude sickness tends initially to get worse on the way down. I crawled back to the Gouter hut and retired to a bunk for the rest of the day.

There is nothing at the top of Mont Blanc by the way – no café, no wilting Madonna, not even a stone or a cross to mark the top, just a bunch of other climbers taking photos of each other. There was nothing to see, either – visibility was down to 50 yards. But Sandy, who had reached the top 120 previous times, swore that it really was the summit. It certainly felt like it. Thanks to YouTube, though, we were able to see what it looks like reaching the top of the mountain on a clear day – as indeed you can, too, without having to put in the footwork.

**Ross Clark**

---

## Swaffham Prior School

---

As Autumn turns to Winter and the days are getting shorter and the nights are getting longer, it can mean only one thing – Christmas is just around the corner! As soon as Bonfire Night has passed and at the first mention of Nativity, the children are filled with anticipation and excitement in differing measures, however, we have had an action-packed Autumn term full of events. 'Learning, Working and Growing Together' is the motto of Swaffham Prior Primary School and I am delighted to confirm this is exactly what I've observed in my short time in school. The pupils, staff, parents and community have been so welcoming and patient with me as I have such a lot to learn.

I firmly believe the school is at the heart of the community and the phrase, 'It takes many hands to build a house but many hearts to build a school.' is absolutely right and already in my brief tenure so far, I am very grateful for the many hearts that make such a great contribution to the pupils at Swaffham Prior. From the dedicated Teaching Assistants and staff who we celebrated in assembly on National Teaching Assistant Day, the volunteers who give up their time to listen to children read or help out with the garden or teach sewing and countless other help we receive, I thank you all; these are all people who enrich the lives of the pupils and make their experience at school so well-rounded. The children are keen to report on two of the experiences that they have felt were important recently and which couldn't have happened without the planning, preparation and support of the adults in the community.

### Children in Need

This is the day we all come together to raise money for those that need additional help. School Council organised for us to come in our pyjamas and have a movie afternoon in exchange for donations. All together, we collected around £140!!! So well done and thank you to the pupils of Swaffham Prior and their wonderful attitude to fundraising.

By Rose and Tabitha

### Remembrance Day

On the 11<sup>th</sup> of November at 11:00 o'clock, people all over the country have two minutes of silence. At this time, we remember all of the brave soldiers that tragically died in the terrible war. We think of how they saved our country, and how many more wars are going on today.



We remember our family and friends that we may have lost in the war. This is an extremely special year for England, as we celebrate 100 years after the First World War. At our school we have looked into the meaning of Remembrance Day and have had our own minute silence on the following Monday. We will always remember how those men saved our country.

By Isabel

## Never Forget

At Swaffham Prior School we are remembering those who fought. We asked one pupil to say what they thought about this event. Tabitha said that it was really special this year, "I feel like it's really important because it's been 100 years since the war ended." On Remembrance day two of the pupils wrote descriptive writing and here they are:

The journey begins.  
Through the sea of destruction they go.  
The mules carry their loads on their weak backs,  
Whilst tongues of fire lash at them forcefully  
And they jump in fear.

By Isabel

The war- born battle field was rumbling beneath my feet.  
Mules screamed and kicked all around me.  
The influence of war was cast upon the world  
As the shrieking shells soared into the sky around me.

By Breeze

**Helen Bartley**

head@swaffhamprior.cambs.sch.uk

---

## Events Team

---

Reach Events Team consists of willing volunteers who like to support the village events, helping us come together in support the whole community. If you have an idea for an event we will help you to make it happen. We also manage Reach Fair.

The team currently consists of:

Hannah Baldwin	Tash Bridgeman
Rebecca Fordham	Jo Mules
David Parr	Debbie Quilter

## Upcoming Events

### Christmas tree lights switch on

Saturday 1st December 5pm

### Village Seniors Christmas Party

Wednesday December 5<sup>th</sup>

12.30 – 3.00pm in the Village Centre

Catherine Gibson has agreed to prepare the food with help from Ian Reinhardt and we already have a good attendance of over 20 people but with a few spaces left. Tickets will be limited (and only for Reach residents who are at least 65 years old), so if you'd like to come along then please let David Parr know (744081 or davidmparr@btinternet.com)

### Christingle Service

Sunday 23<sup>rd</sup> December – 5.00pm

### Carols round the Christmas tree

Christmas eve 6pm

## Christmas Cards

These are now available for sale with the following designs:



To purchase cards (they come in packs of 5 with envelopes), please let David Parr know (744081 or davidmparr@btinternet.com).

## Mini Events Team

The first meeting of the Mini Events Team took place during Apple Pressing Day (see back cover). If your child wants to be involved and hasn't been asked by a Reach friend do get in touch. We know there are a few new Mini village members and the children would love to get to know them.

And the first event will be **Reach Has Got Talent**, please see our poster on page 31.

See the village website for details on all our events

<http://www.reach-village.co.uk/news.html>

Email: reacheventsteam@btinternet.com

Find us on Facebook too!

**Debbie Quilter**



---

## Rosanna's Ramblings

---

I'm writing this piece in early November which is such an important time for remembrance - for memory - for bringing back into heart and mind thoughts and feelings, joys and sadnesses, loves and losses. Whether it's the sober services for All Souls' Day, the Remembrance Sunday events and ceremonies all around the country (including, of course, on Fair Green), the television programmes, things we hear on the radio.... every year I'm struck by how powerful our need is both as individuals and across the board in society to acknowledge and remember.



And it's not just about people who died in conflict, even though this centenary memorial of the end of the First World War brings that quite rightly very much to mind. It is also our individual personal losses, some of which are actual bereavements, one's lost loved-ones mourned. But it is also felt in a general sense of wistfulness and inner resonance with things that were once and no longer are part of our lives.

I recently had to go through literally thousands of photographs stored in my computer in order to organise them for a particular purpose. And within the space of a few hours I had what was in effect a whistle-stop tour through the last six or seven years of my life.

Photos of my mum when she was in the dementia care home, when she was in hospital having had a stroke, when she was on her death bed and of her funeral.

Photos of my dad sitting watching television in his house, and then in the care home and then at Addenbrookes having broken his hip and then at our wedding just two days before he died. And of his funeral.



Iona - where we scattered my father's ashes

Photos of my children graduating once and then for a second time in Cambridge for my daughter; and recently in Birmingham for my son. But before that, photos of taking my son up to Birmingham at the start of his studies. Early walks with Hector, more walks with Hector, walks now more recently without Hector.



Holidays (which always bring with them that heightened sense of focused memory because, well, it's just so different from normal when we're away, isn't it?). So being on Iona a year ago with a happy, happy dog and then just now being on Iona missing that dog terribly - and yet the beauty of the place is the same.

Several seasons of vegetable growing and cooking and eating.

Lots of photos of my first few months enthusiastically embracing Slimming World cooking. And far fewer now as I struggle to keep my focus!

Apple blossom and apple harvesting and apple juicing over several years.

My weight fluctuating. My hair growing longer and then getting shorter again. And then from just a few weeks ago, photos from the Dolomites where my sister and I scattered our parents' ashes in a river they loved.

The circle of life - lives lived and then completed, memories made and memories fading. I know I'm waxing wistful but there you go, that's the autumn for you.

And alongside all that, nature does its spectacular best to lift your spirits with its display of unfeasibly brilliant colours (just check out the 13 big ginkgo trees, and some newly-planted saplings, along the Mill Road in Cambridge ... flaming like giant yellow torches against the backdrop of terraced houses and shop fronts). It's enough to make one's heart sing, especially when the weather is grey and dreary.

It all reminds me of the scene in the famous film of "The Time Machine", watched frequently on Saturday afternoon TV when I was a child, in which time hurtles into the future and then back to the past all in a few short seconds. It's all quite disorientating, like feeling good and pressing a bruise in the same span of time.





**Autumn colours**

But, before we let our lives get utterly hijacked by the Christmas juggernaut hurtling our way, let's raise a glass to the sometimes muted, sometimes intense emotional flavours of the autumn. Who cannot fail to be uplifted by the smell of damp bonfires of soggy leaves? I could stand in the garden and inhale that heady mixture of smoke, mushrooms and soil for hours and regard it as some of the highest-order soul nourishment there is!

Maybe that makes me a seriously Strange Person – probably quite likely. But I do feel that a life without contrasts and variations – whether of weather, or mood, or food, or activities – is a life impoverished. Having been re-reading the wonderful Barbara Kingsolver's book "Animal, Vegetable, Miracle", about a year spent feeding her family in Kentucky only on food they had grown themselves or which came from within that state, I have found myself unable to continue buying blueberries from Egypt or seedless grapes from Mexico. Too many food miles, too much reliance on a seasonally undifferentiated food supply - now that my conscience has been reactivated. I grew up in the 1960s and I remember it was impossible to buy crumpets in the spring and summer and that strawberries were exclusively a June delight. Each year's cycle allowed for forgetting and then remembering again, some seasonal pleasure. So as much as possible we're living on local meat and eggs, and on home-grown potatoes, carrots, chard, beetroot and beans (now frozen) and stored apples and frozen plums with our breakfast. And we're looking forward to eating the Reach-reared meat supplied by Harry.

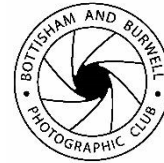
Before you go too far down the line of thinking what an impossible prig I must be, I haven't quite managed to forego bananas yet and my coffee habit is never going to be anything but a long-distance-import-thing, but a girl's got to have a vice or two!

**Rosanna Moseley Gore**

---

## Bottisham and Burwell Photographic Club

---



New members are welcome to join us. Annual subscriptions: Adult £40.00, Joint Membership £67.00, Student £21.00.

Visitors are also welcome to attend any meeting at our venue, Lode Chapel CB25 9EW on Tuesday evenings from 7:30 pm to 9:30pm. Fee: £3.00, including refreshments.

For further information contact the Secretary, Daphne Hanson on 01638 741106 or visit our website [www.bottburpc.org](http://www.bottburpc.org) for a copy of our 2018/19 programme.

**Daphne Hanson**, Hon Secretary

---

## Burwell Museum

---



**Many, many thanks from all at Burwell Museum and Windmill!**

Thank you to everyone that has supported, visited and volunteered at Burwell Museum and Windmill this year. We've had a really successful season, with highlights including an amazing 628 visitors on National Mills weekend in May and another great turnout for Heritage Open Days in September.

We've had over 3,700 visitors over the year and our amazing volunteers have put in over 4,000 hours between them to make sure that the museum continues to be a really great day out. Thank you to everyone who has been to the museum either as a visitor or a volunteer in 2018!

### Become a volunteer

Although we are now closed to visitors until Easter weekend 2019, there is still a lot going on behind the scenes and WE NEED YOUR HELP!

Are you enthusiastic, community-minded and want to offer some time to a local charity? If this sounds like you then please get in touch about becoming a volunteer with the museum. No previous experience required and you'll receive a very warm welcome! We're especially looking for people who can help us to look after our site and buildings; volunteers work on the museum and mill throughout the winter on Tuesdays. Interested? Please email [volunteers@burwellmuseum.org.uk](mailto:volunteers@burwellmuseum.org.uk) or call 01638 605544.

### Dedication of Friends plaque

The Friends of the museum were a very important part of the museum's work between 1994 and 2016. Some of the money which they raised was used to pay for our new entrance building, which is much warmer and more comfortable for volunteers than our old arrangements. At the end of season tea party some of the Friends got together to receive a plaque which will go up in the building itself as a thank you for all their efforts. I know that lots of other people also contributed to the Friends and the museum's trustees and staff thank all of them as well.

**Web:** [www.burwellmuseum.org.uk](http://www.burwellmuseum.org.uk)

**Tel:** 01638 605544

**Address:**

Burwell Museum

Mill Close, Burwell CB25 0HL

---

## Burwell Museum Coach Trips

---



No coach trips are planned now until the end of January 2019 – so please check out our Feb/March 2019 issue of the magazine. For further information and tickets please contact:

**Tina's, Burwell on 01638 741581 or  
Barbara 07887 712296**

---

## Cambridgeshire Fire and Rescue Service

---



CAMBRIDGESHIRE  
FIRE & RESCUE SERVICE  
[pressoffice@cambsfire.gov.uk](mailto:pressoffice@cambsfire.gov.uk)  
[www.cambsfire.gov.uk](http://www.cambsfire.gov.uk)

PREVENTING PROTECTING RESPONDING

Christmas is approaching!

The time of year when we're enjoying a tipple with friends, cooking up festive feasts for the family and entertaining loved ones. With all the fun to be had it is easy to be distracted when cooking in the kitchen.

**50 percent of all fires in the home start in the kitchen and more than half of those are as a result of distraction whilst cooking.**

We want to help ensure your festive cheer doesn't go up in smoke this Christmas by sharing our tips below for safe cooking over the festive season:

- Never leave cooking unattended
- Do not cook when tired or under the influence of alcohol, drugs or medication that makes you drowsy
- Regularly clean the grill pan and oven - built up fat can easily catch fire
- Never leave anything cooking if you leave the house
- Do not leave anything flammable on or near the hob – tea towels, oven gloves and even washing baskets can catch fire
- Take care when using microwaves - fires can start when people put food in for too long.
- Oven chips or temperature control deep fat fryers are safer than using a chip pan. If you do use a chip pan, do not fill it more than one third full with fat and turn the heat down if the oil starts smoking
- Fire can break out in household appliances so you should regularly maintain dishwashers, washing machines and driers, never leave them on if you go out or go to bed and register your appliances online to ensure you are made aware of any faults or recalls
- Have a working smoke alarm on each floor of your home. If it keeps going off when you are cooking it is probably in the wrong location or you may have the wrong type of smoke alarm.
- Never take the batteries out of your smoke alarm.

**If you do have a fire in the house, get out, stay out and dial 999.**

For more information or to get in touch contact us at [firefire@cambsfire.gov.uk](mailto:firefire@cambsfire.gov.uk) or on 0800 917 9994. You can also log on to [www.cambsfire.gov.uk](http://www.cambsfire.gov.uk), follow us on social media or call 01480 444500.

---

## Out and About Autumn and Winter 2018

---

All too quickly the dark days are upon us. Winter birds and flocks of geese arrive, the festive evergreens, holly and ivy flourish, the near-skeletal trees expose collections of twig nests, gold and russet leaves crunch underfoot.



Hearteningly, the early winter weather which often involves fog, heavy rain-laden skies, charging winds, cold, damp and a cheerless gloom are yet to arrive. November still sparkles, skies are blue and often cloudless, frosts and biting winds are few, the sun has warmth.

In the Reach countryside, fieldfares and redwing can be seen feeding on brilliant red hawthorn berries, a contrast to the pure waxy white hedgerow snowberries, a form of deciduous flowering shrub from the honeysuckle family.

In our garden bumblebees can be seen and heard, working hard and grumbling from bloom to bloom.

I drove past a peregrine on the grassy area outside Little Barn in Great Lane, feeding on a woodpigeon. I don't know who was more surprised, the bird or me. I gently reversed and we silently stared at one another, I left it to its meal. This falcon will have attacked its quarry with speed and stealth in a life-or-death chase.

At the neighbouring property, Diana and Peter Ward noted the return of tawny owls to their garden, in the past a walnut tree has been the favoured roost. A grass snake and common lizard were also spotted.

Towards Springhall Farm a sparrowhawk induced panic amongst the songbirds, I glimpsed its fleeting form. This specialist bird-hunter, capable of 50mph short bursts, is built for manoeuvrability in pursuit. I read that the jay, wren and blackbird are the birds which warn other wildlife of approaching danger.

Rats, mice and squirrels store food against winter shortages but the mole stores water against drought. The mole turns round and round until the walls of its earthen run are completely smooth, the 'well' it makes is not perpendicular, this avoids the risk of the mammal drowning if the water is at a low level.

Squirrels do not hibernate but sleep a lot, they grow warmer coats for winter and long tufts of hair on ears. They dislike wind and rain and hunker down in their dreys. Stoats enjoy a partial change of winter colour but never part with their black-tipped tail. Hedgehogs eat enormously before hibernation, preparing for their long period of inactivity. This nutritional fuel enables them to draw from accumulated body fat.

They nest in a collection of leaves & grasses (comfort before design) tucked away in a quiet place, ie. beneath a hedge.

In Great Lane we still see bats zig zagging against the fading light. These impressive little creatures live in the twilight zone. Bats (our only flying mammal) also hibernate but no winter accommodation is prepared, they simply hang head downwards, suspended by hind claws in old buildings, hollow trees, caves & belfries. Sadly, the mortality rate amongst bats during hibernation is higher than any other mammal.

Starlings gather in huge numbers and return to their traditional roosts. Flocks of long tailed tits and goldfinches can be seen and heard hunting the higher boughs of trees, often feeding upside down. French partridge inhabit fields, pheasants scratch feverishly for berries, seeds or acorns.

I disturbed a moorhen near Springhall Farm, this dainty 'waterhen' (or swamp chicken) placed one careful foot directly before the other then flew off in an ungainly fashion. The body seemed too erect with wings overly far forward, out of the true centre of gravity. Though peaceful by nature, on their own territory, these common birds are aggressive to trespassers.



A mass of seagulls following the plough on Swaffham Prior Road - courtesy of Ron Greenhill

### Village wildlife sightings:

Ron & Penny emailed: We have had good viewings of Redwings coming south for the winter since the beginning of October.

We have bought new bird feeders since the virus which killed so many of our garden birds. The finches are back after only a few days.

We have recently put a new hedgehog hibernating house in the corner of our garden although we haven't seen one for a while.

Nick Acklam emailed: Sadly it has been another quiet or at least unexceptional period for sightings. The only stand out entries in the diary are:

From mid to late September, at virtually the same time each morning (0730), flights of geese arrive at Tubney Mere from the north. Initially this involves a score or so of Greylags, but the numbers gradually increase and include a small number of Canada geese.



As previously, I marvel at how quickly so many birds alight on the water without collision. On 17 September I count 60 Greylags on the Mere. By early October the event appears to have ended and the open water is left to Mallard and Tufted Duck.

15 September. I recover a dead Migrant Hawker dragonfly from our lawn.

19 September. Large musical flocks of Yellowhammers and Goldfinches are active in the dense thistle of Old Bar Drove.

15 October. A Buzzard on the ground on the bridle way to the 24 Acres. It takes flight as we approach leaving behind a cluster of fine whitish feathers. I was unable to identify the victim.

21 October. A single Green Sandpiper is flushed by the Boxer from one of the main drainage ditches adjoining Tubney Fen (by the avenue of willows).

27 October. A solitary Mute swan flies across Tubney Fen tinged orange by the rising sun. An impressive sight.

4 November. My first sight of Fieldfares in large numbers - a sizeable flock works its way up Straight Drove, moving between the hawthorns on either side. The grey of the birds' rumps and the red of the haws is very evident in the morning sunshine.

10 November. The carcass of a wood pigeon, freshly plucked, headless and with half its breast missing, lies in the Pocket Park. I suspect this is the work of a female Sparrowhawk.



Goldcrest

Dafila emailed: We had great views of three short-eared owls on Burwell Fen the weekend before last. Also, by extraordinary chance, just after I had been talking to Juliet at the SWLA about the goldcrest that I saw earlier in the year foraging with a group of long-tailed tits (and which featured in one of my SWLA paintings), I saw two goldcrests, again with long-tailed tits, on the edge of the wood! Otherwise, moorhens, goldfinches, and greenfinches as well as robins in the garden.



Long-Tailed Tit

Hilary emailed: Not much in the way of wildlife this month apart from regular sightings of a pair of Barn owls, presumably from the Owl Box at Jason Cooper's yard. Heron taken up pose in the field opposite tubney again this autumn.

A few weeks ago someone abandoned two white cockerels in the hedgerow of Tubney Fen. One has since disappeared. But one remains scratching under the hedgerow and roosting in a Field Maple at night. Getting quite fond of him. Good on him for surviving this long. Go Cockerel!!



Fieldfare

**Joss Goodchild**  
jossbmg@icloud.com

---

## Swaffham Prior Gardeners

---

**Indoor meetings are on a Tuesday at 8pm in Swaffham Prior Village Hall.** Membership is £15 per person. Visitors are always welcome: £3 per evening.

Chairman: Peter Hart 01638 741681  
Treasurer: Maggie Haverson  
Secretaries: Margaret Joyce and Mary Hart 741681

---

## Wicken Fen and Anglesey Abbey News

---

We're starting to experience some lovely crisp, frosty mornings here at Wicken Fen, and more of our overwintering birds are starting to return. We've had several reports of **short-eared owls** over on Burwell Fen, so those of you who like to walk in this area may want to take some binoculars with you to see these beautiful birds.



Short-eared owl, Burwell Fen, photo Richard Nicoll

There is a **new West Mere hide** that has recently been installed and is well worth a visit. The hide is in a better position to see more of the mere area and is elevated to offer a fantastic view. Even if you are not a keen bird watcher, it's a lovely place to stop off on your walk to soak up the peace and tranquillity of the fen.

We've also been fortunate to receive a WREN grant to improve access to our **Woodland Walk**, so work will be taking place during November to install some new boardwalk and special hogging surface to paths. There is a rolling programme of works so there should be very little disruption for visitors.

By the time you read this article the construction of a **temporary viewing platform** on the edge of the Sedge Fen should be complete. This platform is part of our Resting the Sedge Fen project, and will allow us to rest delicate peat soils in this area, while offering visitors spectacular 360 views. We're hoping to build a permanent structure in due course.

December's festive activity for under 5s is part of our **Father Christmas at the Fen** season: follow a Christmas trail, visit Father Christmas in Fen Cottage and do some festive crafts with our elves. These activities take place on Wednesday 12 and Thursday 13 December from 10:30-12:00, and the cost is £10 per child (normal admission applies for accompanying adults, NT members free). Pre-booking is essential for these activities, see:

<https://www.nationaltrust.org.uk/wicken-fen-nature-reserve/whats-on>



The new West Mere Hide, photo Julia Hammond

We're open every day except Christmas Day, so do join us for a festive walk over the Christmas period. You can warm up with a hot drink and a treat in our café afterwards! If you want to get the New Year off to an active start, we're offering our new Wicken Winter Wildlife Safaris on Saturday 12 and Sunday 20 January, from 14:00-15:30. Join one of the rangers on a walk into the reserve, where you will be able to spot winter wildlife, and learn about our grazing herds and how they contribute to the fen landscape. It's the perfect way to explore the wider reserve at Wicken Fen and experience a fen sunset. The walk costs £8 per adult which includes a hot drink.

Julia Hammond

---

## Pets Corner

---



Millie Bjork - ready for Christmas



---

## What's Growing on at Snakehall Farm?

---



### Remember Prospects Pumpkins are not just for Halloween!

Our farm shop is a stew pot waiting to happen! We are still busy sending out weekly deliveries to our wholesale customers COFCO, Arjuna and Daily Bread among others and stocking up our farm shop shelves daily. In our farm shop this autumn you will discover squashes and pumpkins in a dazzling array, garlic, tomatoes, onions, potatoes, leeks and your much needed greens spinach, salad and kale.

We also have our orchard offerings in apple and preserved form. We have our potted herbs to boost your soups or scatter over your winter roasts. We even have a recipe card with some pumpkin inspiration for our Autumnal shoppers.

And [many apologies, we can't let the Co-workers get out the tinsel yet] our wonderful, let's go with festive [see still not mentioning that word] crafts and seasonal gifts will be in stock soon. Sparkly Antler Wooden Reindeer anyone? [mmmm did we get away with that?]

---

#### Acres of Smiles thanks to our Amazon Shoppers

We promise not to mention the Festive Season too much [sshhh oh no the Co-workers will have the glitter pots out tomorrow] but we know that Black Friday date is coming up. If you don't prefer to shop local or need more variety in your "seasonal" stocking than a pot of Prospects Preserves or a Log Reindeer then please think of us when you make your Amazon purchases. Simply shop Amazon Smile and select The Prospects Trust as your chosen charity



You could of course make your [arrrrghhh not again] festive gifting a little more responsible this year and give a gift of a donation to us instead, we can see the gift label now "Dear Mum, its that time of year to show how much I love you with a thoughtful gift of a spade [\*other items available] to The Prospects Trust". \*[Amazon Wish List](#).



We provide day placements for people with additional needs to "grow diff" on our 18 acre organic care farm and off-site on our Garden Team. With specialist team of staff we can offer supportive placements working as part of a team or 1:1 for those with higher needs.



**For more details call us:**  
01638 741 551  
rhian.comell@prospectstrust.org.uk  
www.prospectstrust.org.uk  
Twitter & Facebook: @Tilly Tractor

Maz Baker



---

## Family Focus

---

Wow where did that year go? Here we are getting ready for Christmas and the excitement has already well and truly hit in this house. The girls have made their lists (some more realistic than others) and I'm well under way with my shopping for once which may mean I'm forgetting something. I'm trying to be more structured this year over what we buy following the guidelines I found online which says to try and stick to buying "something they want, something they need, something to wear and something to read." I'm hoping it will stop me just buying for the sake of it and mean we all get more thoughtful gifts.



In the run up to Christmas there are lots of lovely days out to have together, you might have been lucky enough to nab tickets to the winter lights at Anglesey Abbey which I'm told get better every year (I went a couple of years ago) but if not maybe pop it on the list for next year. We are so lucky to have such a lovely place on our doorstep.

We start the Christmas traditions in our house with a trip to Bottisham to buy our Christmas Tree. We usually go to Parsonage Farm in Bottisham to choose ours, you can have a walk round to choose your tree before getting one of the assistants to mark it for you to collect at a later date or cut it down straight away before you carry it to get wrapped to take home. You couldn't get much fresher than that! Then it's just the decorating to finish off, we usually all lend a hand at this point. More information on Parsonage Farm Christmas trees can be found at [www.cambridgechristmastreeexperience.co.uk](http://www.cambridgechristmastreeexperience.co.uk).

Another trip we take is to visit Father Christmas. A really nice Santa experience is a trip on the Christmas train at Audley End, you book your tickets either for an hour slot or for an allotted time to board the train and go for a ride through the woodlands looking out for the toys and elves hiding in the woods before arriving at Father Christmas' clearing. Father Christmas walks along the train handing out a small gift and some sweets before you go for a ride back to the station. Back at the station there are rides for the children and a park area as well as a catering tent offering warm food and drinks. You have to book tickets for this event which you can do at [www.audley-end-railway.co.uk](http://www.audley-end-railway.co.uk).

We also really look forward to the light switch on on our own Fair Green as well as Christmas Eve carols which really gets us in the festive mood. There is so much to do at this time of year I could go on forever but whatever you do this year have an amazing Christmas.

**Tasha Bridgeman**



# Bottisham Village College

## Adult Learning

Are you interested in learning something new in 2019? Our full range of courses is available on our website: [www.bottishamvc.org/adultlearning](http://www.bottishamvc.org/adultlearning)

### Courses include:

Art & Artists (morning)

Calligraphy (afternoon)

Creating Glass Jewellery

Cookery: Italian Meat Dishes, Breads & Focaccia;

Traditional Home Baking; Chocolate Galore; Curry

House Favourites

Digital Photography: Night Shots & Winter; People &

Motion Floristry: Spring Flowers for the Home

Knitting: Learn the Basics

Making the Most of Your Garden (Horticulture)

Understanding Modern Art

(the above are evening courses unless specified)

### Saturday Workshops include:

Affordable Floral Wedding Tables & Pew Ends

Cook with your Kids

Creative Writing – Short Stories

Dichloric Glass Jewellery

Get to Know your Ipad/Tablet

Indian Fast Foods (Cookery)

Make-Up: Fabulous Over 40s

Printing without a Press

Tai Chi Workshop

[www.bottishamvc.org/adultlearning](http://www.bottishamvc.org/adultlearning)

Tel: 01223 811372 Email:

[adultlearning@bottishamvc.org](mailto:adultlearning@bottishamvc.org)

Facebook: [BottishamAdultCommunityLearning](https://www.facebook.com/BottishamAdultCommunityLearning) or

Twitter: [@CommunityEdBott](https://twitter.com/CommunityEdBott)

---

## Tales from a Reach Garden

---

I thought last autumn's display of berries was lovely, but this year's array of berries in the hedgerows and garden has been spectacular, which should provide plenty of food for wild birds (and a few mammals too) in the coming wintery months. Our sole beech tree dumped a load of beech mast on to our lawn and driveway and attracted a lot of wood pigeons, collared- and stock doves, as well as the inevitable squirrels.



Loads of hawthorn berries around Reach this year

Among the many berries which thrived in the hot weather conditions this summer and early autumn were our grapes. We grow 3 vines:- two grow outdoors and cover a trellis with very decorative foliage and provide some shade on the patio. These are "Boskoop Glory" a Dutch variety which has been bred to provide black dessert grapes suitable for cooler conditions and "Lakemont" - a white seedless grape which provides large bunches of small grapes. In the polytunnel a vine of "black Hamburg" grapes has provided us with dessert grapes reliably for several years. Each year the number and size of the bunches increase. The outdoor varieties rarely ripen fully; however, in those years when they do ripen to full sweetness, the pigeons have got to them before we do and the grapes become a sticky mess attracting wasps and bees.

This summer has been an exception – the pigeons have had plenty to eat elsewhere and we've been eating bunches of Lakemont and Boskoop glory as well as Black Hamburg grapes every day since the start of September through to November. With the surplus grapes I've made a grape jelly which can only be described as shocking purple in colour but tastes lovely when spread on toast and scones. We juiced most of the rest of the grapes, but we left a few on the vines for any hungry birds.



Black Hamburg grapes prior to being turned into jelly

Our apple trees and pear trees were heavily laden too. We are still eating our way through those as well as making pies and cakes and turning the excess apples (including some crab apples) into cider. Richard has spent many evenings cutting and crushing windfalls, misshapen and overripe apples into juice which is gently fermenting away. Over the last few years he has blended the various demijohns of fermented juice and created a very dry cider which we have got used to drinking occasionally – and actually enjoy too.



Apple juice fermenting in demijohns



Most of our cider is used in cooking and is lovely for braising pork, rabbit or chicken which make warming, hearty meals on cold days. I think it is fair to say that we find many commercial ciders too sweet to drink now and I certainly would not use them in savoury dishes, which makes us wonder how much extra sugar is added for sweetness as our apples were quite sweet prior to bashing!

**Danuta Gibson**

---

## Apple Pressing Day

---

On the 7<sup>th</sup> October we celebrated Apple Day 2018 by having a community apple pressing on the village green. With the sun shining out of a blue sky the village's end of season apples were washed, chopped and pressed, and the organic, fair trade, zero air-miles, mixed-variety juice bottled for people to take away.

The village press – donated a few years ago by Jo and Paul Redfarn – has a cross-beam mechanism, with the pressure being created by a hydraulic jack. The whole thing is mounted on the back of a trailer and towed behind a tractor (thanks to Andrew Trump). Not a standard arrangement but it works.



We held our first apple day three years ago. At that time a demijohn of juice was fitted with an air lock and then abandoned in David Parr's cellar. The writer George Monbiot, writing in the Guardian, has some cautionary advice on cider making: *"Most of the people I know who press apples use them to make cider. It seldom works. Cider making is a fine art, which may involve a dead rat (the nitrogen it contains assists fermentation), plenty of swearing, a fair bit of magic and even more luck. Mostly it involves turning several hundred gallons of delicious juice into homemade Toilet Duck. My advice is to stick to the juice"*.



### Origin of the word 'demijohn'

The word demijohn is thought to be a partial translation and word-play from the French dame-jeanne (late 17c.) translated as "Lady Jane," the term used for a large, globular wicker-wrapped bottle, the shape of which suggested a stout woman in the costume of the period. Dame-jeanne is a general Mediterranean word, with forms found in Spanish, Portuguese, Italian, and Arabic.



Perhaps surprising then that David's vintage brew came out pale and clear and didn't taste too bad. Clearly luck was on his side. *[Talent – Ed]*

Apple juice is one of the most common fruit juices in the world – over a million metric tonnes are produced each year, with world production led by China, Poland, the United States, and Germany. But it is quality not quantity that counts and a bottle of juice purchased in a supermarket doesn't compare to drinking fresh juice from your own apples, produced through your own labour. So put a note in your diary to come along and enjoy the apple pressing in 2019 – you don't need to supply any apples, there are plenty to spare around the village.

**David Thomas**



---

## Food Focus

---



### Within Reach Food Focus

Mike Malster's Fail Safe Beef Stew (a Sunday supplement recipe from Gordon Ramsay yonks ago)

#### Ingredients

Olive oil  
750gm stewing beef  
1 large onion (chopped)  
2 sticks celery (chopped)  
2 carrots (sliced)  
1 bay leaf  
6 anchovy fillets  
500ml red wine  
600ml chicken stock

#### Method

Heat oil, season meat and brown – set aside. Add more oil and cook vegetables until soft (10 mins). Add bay leaf, anchovies – cook for a few minutes until broken down. Add wine and boil until reduced by half. Add stock and return beef to casserole. Season and bring to boil. Transfer to oven and cook at 150°C for 2-3 hours. Leave overnight and reheat.

### PS Foody Markets and Food Festivals happening near you

Burwell Farmers Market (Burwell Village College) 2<sup>nd</sup> Saturday of the month

Ely Farmers Market 2<sup>nd</sup> and 4<sup>th</sup> Saturday of the month (8.30 -2) - a Christmas Market (with lots of food producers) - Friday 21<sup>st</sup> December (8.30 – 3.30)

Cambridge's Mill Road Winter Fair Saturday 1<sup>st</sup> December with market and food stalls lining the street and a food fair in Gwydir Street Car Park (10.30 – 4.30)

La Hogue (farm shop near Chippenham) has Father Christmas visiting on 8<sup>th</sup> and 9<sup>th</sup> December (booking essential)

Stretham Farmers Market Saturday 15<sup>th</sup> December (9am-1pm) with carol singing

Catherine Gibson

---

## Burwell Bowls Club

---



Burwell Bowls section of the Ex Service and Social Club are looking for new members - so if you fancy bowls (any age is welcome) you can go along on a Tuesday evening at 6.15 pm and have a try or alternatively call Peter Green, chairman and secretary to have a chat.

Although bowls has an unfortunate reputation amongst many as an old person's game, in fact the leading players are mostly young! Peter recommends it is a game that you can take up in teenage years and carry on through to your 70's and 80's as it requires considerable skill but only modest physical fitness.

If any individuals or groups are interested in organising an evening try out please call Peter Green to discuss, on 01638 742665 Great facilities right in the middle of the village for a social activity right on your doorstep.

---

## Letter from the Vicarage

---

Are you ready for Christmas?

That's a question that's pretty much guaranteed to send a wave of panic over me - because there always seems to be so much to do! It can sometimes feel as if there is no time to breathe, let alone find space to think.



I wonder if sometimes we get caught up with the image of 'The Perfect Christmas', presented to us so often in the media, which is actually a bit of an impossible illusion.

Because life is messy. And people are complicated. And sometimes, sad things happen and the people we want to be with us at Christmas aren't here anymore.

What is Christmas really about then? I was in a shop a while ago and I searched for ages through the huge display of Christmas decorations, until I turned around and there was the traditional nativity crib scene. It made me think that sometimes we may have to search a bit and clear some space and take a bit of time out of the busyness, but then we find again what Christmas is really about. That we are not alone - God has come among us, as a tiny, helpless baby, as Jesus, into the middle of all our human messiness, to show us just how much we are loved. When life is busy and it seems as if the 'do list' is never ending, it can be life-giving to pause, even just for a few moments and remember what's really important.

And give ourselves permission not to have to do everything! One of my favourite times of the day is when I pop late in the day, for a precious few moments of quiet, to just sit, and then to pray. There's a very ancient prayer for Advent, which is, quite simply, 'Come, Lord Jesus!' It's a good place to start, as it's a prayer we can use whenever, and wherever we are, even if we just have a few moments.

During Advent and Christmas, our services in Reach include Advent Candlelit Night Prayer on Wednesday 5<sup>th</sup> December at 7pm, Christingle service on Sunday 23<sup>rd</sup> at 5pm, and then an early communion service at 8am on Christmas Day. For the last few years we have had a Remembering Tree at St Mary's from mid-December, with stars bearing the names of loved ones who have died. This year we will also have a special tree in Reach, and all are welcome to add a name to a star for the tree. Both churches will be open a little later each night during the week before Christmas if you want to pop in for a quiet space to remember, and perhaps light a candle. Please do get in touch if you would like to find out more about any of our events or services in Reach and at St Mary's, Burwell. Updates are posted on Facebook and our website.

May the joy of the angels, the eagerness of the shepherds, the perseverance of the wise men, the obedience of Joseph and Mary, and the peace of the Christ child be yours this Christmas.

Revd Dr Eleanor Williams, Vicar of Burwell with Reach  
01638 741262 [vicar@stmarysburwell.org.uk](mailto:vicar@stmarysburwell.org.uk)

**Revd Dr Eleanor Williams**  
Vicar of Burwell with Reach,  
01638 741262  
[vicar@stmarysburwell.org.uk](mailto:vicar@stmarysburwell.org.uk)

---

## Christingle

---



The Christingle Service is a very special service for all ages, which also raises money for The Children's Society. Services are held in churches and schools all over the country. This year it is 50 years since the first service in England at Lincoln Cathedral on 7<sup>th</sup> December 1968. But the story of Christingles actually goes back much further, to the Moravian Church in Germany. At a children's service in Marienborn in 1747, Bishop Johannes de Watteville looked for a simple way to explain the joy that comes through Jesus Christ and decided to give the children a symbol to do this.

In 1968, John Pensom of The Children's Society adapted Christingle & introduced it to the Church of England, with children decorating an orange with a red ribbon, dried fruits, sweets and a candle to create a new visual representation of Christ, the Light of the World.



Many children are facing a multitude of problems in our society today. Christingle collections raise millions of pounds each year to support the work of the Children's Society with young people who are experiencing a range of complex issues, and who feel alone, with the hope of bringing love to the hearts of children who feel ignored, sanctuary to the lives of those who feel unsafe, and peace to the minds of young people who feel like they simply don't matter.

Visit [www.childrenssociety.org.uk](http://www.childrenssociety.org.uk)  
for more information about the work of The Children's Society

**"We listen. We support. We act.  
We help make small changes  
that make a big difference.  
Because no child should feel alone."**

### Christingle Services

Sunday 2<sup>nd</sup> December

4.30pm St Mary's Burwell &

Sunday 23<sup>rd</sup> December

5pm St Etheldreda's, Reach



**No need to book for these  
very special Candlelit Services  
Donations may be given for the  
work of The Children's Society**

Photo Credit: Simon Ogilvie

## Reach Church Update

As mentioned in the last edition of Within Reach, we are moving forward steadily, if fairly slowly, with the future plans for the development of Reach church. We started the first stage process of applying for a Faculty (the Church of England's equivalent of planning permission) by submitting the draft plans and other documents to the Diocesan Advisory Committee (DAC). The Archdeacon and some committee members visited the church early in October and reported back to the full DAC at the end of the month. The DAC was supportive of what we aim to do but have raised a few questions and made some suggestions for us to consider. These included insulating the walls to their full height, instead of only half way up and installing secondary glazing. The PCC is currently considering these ideas, with input from the architects, and is also looking at the various options for a form of heating that will be 'greener' than the oil-fired system initially proposed. This refining of the design does take time but will hopefully result in a considerably warmer church.

In parallel with this, quotes are being sought for the archaeological survey of the arch. The next stage will be to consult with various heritage bodies and the District Council before applying for a faculty to carry out the conservation work.

We also hope that some minor repairs to the lights will be in place in time for the Christmas services.

**Pat Chalmers**

## Reach Riders



The Reach Riders Group Committee consists of:

Sadie King (Chair)  
Sue Cameron (Secretary)  
Claire Halpin  
Gemma Rolfe  
Liz Tabecki

Anyone interested in joining should contact Sue Cameron for a membership form, terms and conditions and disclaimer. Email [ewenandsue@btinternet.com](mailto:ewenandsue@btinternet.com) or Tel 07879627859

## Know Your Parish Council

Your councillors are:

Nathan Bridgeman	Councillor	
Charlotte Cane	Chair	741064
Alex de Giorgio-Miller	Councillor	07771 348013
Hilary Fielding	Vice Chair	741853
David McMillan	Councillor	741259
Andrew Trump	Councillor	07980 955490
Diana Ward	Councillor	744210
Allan Alderson	District Councillor	741744
Joshua Schumann	County Councillor	

Your Clerk is Susan Bailey  
29 Great Lane Reach CB25 0JF; 01638 743794  
[reachparishcouncil@live.co.uk](mailto:reachparishcouncil@live.co.uk)

All Grant Fund applications should be made to Susan.

Meetings take place in the Village Centre on the first Wednesday of each month. They start at 7.30pm and all Reach villagers are welcome to attend.

## Reach Grant Fund

The Grant Fund replaces the Amenity Fund and exists to fund community activities in Reach.

Applications should be sent to the Parish Clerk:

Susan Bailey, 29 Great Lane Reach CB25 0JF  
01638 743794 [reachparishcouncil@live.co.uk](mailto:reachparishcouncil@live.co.uk)



---

## Parish Council Meeting Minutes

---

### Minutes of Reach Parish Council meeting held on: Wednesday 3<sup>rd</sup> October 2018.

#### Attendance

Charlotte Cane	Chair	Present
Hilary Fielding	Vice Chair	Present
Alex de Giorgio-Miller	Councillor	Present
Diana Ward	Councillor	Not Present
Andrew Trump	Councillor	Present
David McMillan	Councillor	Present
Nathan Bridgeman	Councillor	Present
Susan Bailey	Clerk	Present
Allen Alderson	District Councillor	Not Present
Joshua Schumann	County Councillor	Not Present

#### Apologies for absence

Received and approved

#### Forum for members of the public.

Several members of the public attended the meeting to inform the council of their views regarding the amendments to planning application 18/00905/FUL Vine House Fair Green. The amendment is regarding the access issue highlighted by Local Highways. The members of the public are concerned about the new measurements and how they will be achieved. It was also noted that the amendments were unclear on the ECDC website which made it very difficult to see exactly what the changes were.

A member of the cricket club attended the meeting to ask the PC if they were happy with their mowing following the purchase of a mower earlier this year. The other users of the 24Acres and therefore the PC are happy with the service. Due to an increase in use the Cricket club are thinking of seeking permission to build a club house on the site and would like to hear the view of the PC. They will also ask for opinion from NT, and the other users of the 24Acres.

A resident asked for the support of the PC in trying to get Sanctuary Housing to have the trees pollarded on their land on the Burwell Road. It was noted that the garages & surrounding areas owned by Sanctuary Housing are not maintained. **Councillor Bridgeman & de Giorgio-Miller** to have a look.

#### 1. Declaration of Interests

Councillor Cane declared an interest in the planning application 18/00905/FUL Vine House Fair Green, discussed during the forum for members of the public.

#### 2. Planning Applications

Amendments to planning applications had been received too late to be included with the agenda. Therefore, the PC will hold an additional meeting on Monday 15<sup>th</sup> October 2018. **Councillor Bridgeman & de Giorgio-Miller** to visit the site of 18/00905/FUL Vine House Fair Green to look at the access and measurements prior to this meeting.

#### 3. County Councillor Report

None received.

#### 4. District Councillor Report

None received.

## **5. Minutes of previous Meeting**

Approved as correct.

### **6.1 Reach Grant Fund**

The Halloween disco application had not been received prior to the meeting. The PC agreed to add this item to the extra meeting being held on the 15<sup>th</sup> October. The PC are constrained by law, therefore enough information must be received, prior to the event, to allow approval of spending Grant Fund money.

**Councillor de Giorgio-Miller** to create a form for the website to make it easier for members of the public when applying for Grant Funds.

### **6.2 Finance**

The PC had received the second part of the precept.

Planning permission had now been received to work on the Cherry trees on the lower Green. **Clerk** to arrange.

The PC approved a payment to SLCC - The Society of Local Council Clerks. This will give the Clerk and the PC a large amount of information and support on council matters.

The CR Contracting payment has been increased to include the completed hedge cutting.

### **6.3 Parish Council Members**

Residents had contacted councillors on several points.

A property on the corner of Great Lane had again had its wall knocked down. **Councillor McMillan** to investigate adding information to Sat nav. systems.

Residents had highlighted planning application 18/01238/RMM - Reserved matters for change of use of existing caravan touring park site for the siting of up to a maximum of 91 mobile homes with new access to include communal open space, resident meeting hall, park office and associated park infrastructure pursuant to outline planning permission 16/00686/OUM - Stanford Park Weirs Drove Burwell. PC to discuss at the additional meeting 15<sup>th</sup> October.

It had been noticed that highways signs in the area were becoming obscured by trees. This can be easily reported on the CCC highways website.

### **6.4 Play Spaces**

#### New playground:

Albert's bench sanding and staining has been arranged. A work permit form has been sent to the boys. The risk assessment was approved and a budget for materials/equipment was set. **Councillor de Giorgio-Miller** to buy materials. One of the grass mats at the end of the zip wire has broken apart. Kompan think this is either due to the mower being set too low or vandalism but have agreed to replace for free. No time scale has been given for this. **Clerk** to discuss with CR Contracting.

Hedges on the playing field have been cut.

As agreed the Tesco bags of help application had been altered (to include the cost of three benches & installation) and submitted.

#### Old playground area development:

Stage 2 application had been made for Postcode local trust funding by the Reach Village Centre Committee. We should be notified of the outcome by November 30<sup>th</sup>. **Clerk** to write giving the Reach Village Centre Committee permission to complete this project on Parish Council land.

Logs have been put in place to protect the area before development work can take place.

### **6.5 Rights of Way**

The pathway between Reach Wood and the Byway at the back of Ditchfield is still very overgrown. **Clerk** to ask the Prospects trust for a quote. Adjoining landowners will then be contacted.

Highways are awaiting the Community payback team to work on Blackberry Drove where the road planings have been placed.

**Clerk** Highways issues to be put on the November agenda and Councillor Schumann to be contacted.

### **6.6 24Acres Committee**

The 24Acres committee will be holding a meeting on the 11<sup>th</sup> October. The main agenda item is to discuss options for further tree planting. However future plans and possibilities for the 24Acres will also be discussed. **Councillor Fielding** to attend.

## 6.7 Friends of Reach wood

The ragwort has started flowering. The autumn mowing will now take place in October. **Clerk** to arrange.

## 6.8 GDPR

Work continues to ensure the PC fully complies with this legislation.

## 7. Recycle bank

Following the ECDC Regulatory Service Committee decision to remove “bring” banks from all but 5 sites our bring bank will be remove w/c 15th October 2018. The PC had not received any request from residents to keep this service therefore the removal will take place as scheduled.

## 8. Fees – cemetery & mooring

Cemetery fees would be put up 5%, except for ‘Interments for persons whose age at death exceeds 12 years’ and ‘Exclusive right of burial’ which will increase by 20% to help bring Reach fees in line with those of other local cemeteries. **Clerk** to update.

The mooring fees will not change.

## 9. CAPALC general data protection membership

This will provide support for member councils in preparing and handling a potential breach under the GDPR legislation. The CAPALC scheme helps reduce the risk of substantial future costs in the event of a breach. They will provide on-going support via consultancy, customer service resources, and education for staff & councillors. CAPALC will act as a representative and data protection office for each Parish Council. Approved.

## 10. Information Items/AOB

CAPALC are holding a councillor’s coffee morning 10am 18<sup>th</sup> October in Burwell.

## 11. Payments

CR Contracting – mowing contract	£1,827.00
E. On - power on the green	£7.65
CAPALC general data protection membership	£25.00
SLCC membership	£92.00
NT – 24Acres lease	£10.00
S Bailey – Clerk salary	£1,373.07
S Bailey – Clerk back paid holiday pay	£1,357.18

# **DRAFT Minutes of Reach Parish Council meeting held on; Wednesday 7<sup>th</sup> November 2018.**

## Attendance

Charlotte Cane	Chair	Present
Hilary Fielding	Vice Chair	Present
Alex de Giorgio-Miller	Councillor	Present
Diana Ward	Councillor	Present
Andrew Trump	Councillor	Present
David McMillan	Councillor	Present
Nathan Bridgeman	Councillor	Present
Susan Bailey	Clerk	Present
Allen Alderson	District Councillor	Not Present
Joshua Schumann	County Councillor	Not Present

## Apologies for absence

Received and approved



**Forum for members of the public.** Several members of the public attended the meeting to listen to the speaker.

**Speaker - Mark Deas - Rural Housing Enabler & Neighbourhood Planning Officer Cambridgeshire ACRE to discuss the neighbourhood plan process and the support available.**

Mark started the meeting by outlining what the Neighbourhood Plan was, and what support was available.

The Neighbourhood Plan is a way of helping local communities to influence the planning of the area in which they live. Once adopted the Neighbourhood Plan has statutory weight & must be considered by planners whilst the Local plan is in place.

A Neighbourhood Plan will take approx. 18 months to complete and should be updated at least every 5 years. Lots of volunteers will be required as this is not something that a PC can take include in its normal business. The Neighbourhood Plan must be approved by a Parish referendum and get 50%+1 of votes to be passed.

There is lots of help available from various sources, both financial and guidance. The first meeting will need to be paid for by the PC and all subsequent costs should be covered by the Locality grant available. This will be a cost of £400.

The village should decide whether there is a need for a Neighbourhood Plan, is there dissatisfaction with planning procedure, is there the likelihood of large planning applications. A neighbourhood Plan would allow the village to influence the design, character and types of properties to be built.

An alternative to the Neighbourhood Plan would be a Parish Plan however this holds no weight with planners.

Nick Acklam to carry out more research and report back to the PC.

**1. Declaration of Interests**

Councillor Trump declared an interest in the cricket pavilion decision.

**2. Planning Applications**

**18/01397/OUT two bungalows at the site southwest of Hill Farm, Fair Green, Reach**

Following discussion, the Parish Council agreed to make the following comments regarding this application

- This development is outside of the village envelope and should be considered as backland development. It is separate from the build line of the village, and outside the standard form of the village within the conservation area.
- The Parish Council supports the building of retirement properties within the village.
- Access to the site is on a byway. The Parish Council are concerned about this setting a precedence for the use of byways as access roads.
- The Parish Council felt that the junction with the highway would not be a problem.
- The Parish Council would like the protection of the view along Back Lane be a condition of the build, should this development go ahead.

**3. County Councillor Report**

None received.

**4. District Councillor Report**

At our full council meeting in October we received a presentation on the police restructuring of the area these are some of the points that came out: -Neighbourhood Policing – April 2018 onward

Sustainable policing model for the next 3-5 years

- Recognises and responds to changing demands
- Better match of resources to demand
- Deliver a police and crime plan

An example of a month in East Cambs-

- Each month the constabulary on average attend 3102 calls for service
- 98 will relate to domestic abuse
- 111 concern incidents
- 24 will relate to burglary
- 8 sex offences
- 84 missing people

The last month I have been involved in yet more fly tipping incidents. These include such things as vehicle tyres, mattresses, dismantled kitchen units and empty gas bottles. It is a pity that some people are so thoughtless as to spoil our countryside with their disregarded items. They will be prosecuted if caught.  
This last month I have attended several council meetings and been involved in various planning matters.

New Local Plan Should be going to Council in April for adoption. We presently have 3.9 years of housing supply. Should have our quota by April.

The new Ely southern by-pass opened on Wednesday 31st October. The railway underpass closed on Thursday 1st November. It will be closed for about twelve weeks while it is adapted to take pedestrian and light traffic.

## **5. Minutes of previous Meeting**

Approved as correct.

### **6.1 Reach Grant Fund**

A request had been received for up to £500 payable with receipts for 3 village events. The Remembrance Sunday Event, and the two Christmas Events. The Christmas tree will also be purchased for £175. Approved.

### **6.2 Finance**

The PC is in a financially stable position.

A meeting will be held on the 13<sup>th</sup> November to discuss the next financial year's budget.

The PC approved the purchase of the SLCC Yellow book for £108.99.

A quote had been received for work on the Willow on The Hythe, a decision on this would wait until after the budget meeting.

### **6.3 Parish Council Members**

Councillor Trump had received communications from Anglian Water, regarding the land on The Hythe, stating that *"there is little scope to release the land for other purposes"*. The PC find this disappointing and will continue communications.

### **6.4 Play Spaces**

#### New playground:

Albert's bench sanding and staining has been completed, thanks go to Dylan & Harry. Councillor de Giorgio-Miller to store materials.

There is no news on the Tesco bags of help application yet.

#### Old playground area development:

No news on Postcode local trust funding by the Reach Village Centre Committee. We should be notified of the outcome by November 30th.

### **6.5 Rights of Way**

**Councillor Fielding** to meet, next week, with The Prospect Trust to discuss the pathway between Reach Wood and the Byway at the back of Ditchfield.

### **6.6 24Acres Committee**

The Cricket Club would like to the PCs "in principle" approval for the building of a pavilion. Approved awaiting more details.

A grant is available from the Forestry commission. Nick Acklam is to meet them on site to discuss.

### **6.7 Friends of Reach wood**

Nothing to report.

### **6.8 GDPR**

Work continues to ensure the PC fully complies with this legislation.

## 7. Sanctuary House area on the Burwell Road

Councillors Bridgeman and de Giorgio-Miller visited the site following concern from a local resident. The tree looks to be in a similar condition to those around it and the garage area is in not too bad a condition. It was felt that there was nothing for the PC to get involved with.

## 8. Grant fund application form

Councillor de Giorgio-Miller had produced aa application from. Approved.

## 9. Agenda circulation

The agenda will be circulated on Facebook to improve transparency to the village. If there is anything unusual with the agenda approval will be gained from the Clerk and Chair.

## 10. Information Items/AOB

A police and crime commissioners meeting is to take place, no Councillor is able to attend.

It had been noted by residents that the website is not up to date. **Councillor McMillan** to set up a link to what is required. Transparency will be added to the January Agenda.

## 11. Payments

CR Contracting – mowing contract	£302.00
E. On - power on the green	£8.51
S Bailey – Holiday pay under payment	£522.92
S Bailey – Postage & stationary	£134.02
A de Giorgio-Miller – Alberts bench materials	£47.49
D Thomas – Apple day expenses	£14.95
Dylan & Harry – Alberts bench cleaning	£50.00

---

## Jobs

---

Do YOU have the skills to help us grow?

### Cleaner required

We are looking to recruit a cleaner to join our team to maintain our communal areas, office areas and toilets.

The role is 6 hours per week, working 2 hours on Tuesdays, Wednesdays and Thursdays, times to suit between 3.30 and 6.30pm. Mondays and Fridays are covered by our existing cleaner.

Rate of pay is £8.75 per hour and the post is subject to an enhanced DBS check.

For more details on this role please:  
visit our website: [www.prospectstrust.org.uk](http://www.prospectstrust.org.uk),  
e-mail: [enquiries@prospectstrust.org.uk](mailto:enquiries@prospectstrust.org.uk) or  
telephone 01638 741551 and speak to Hannah.

Closing date for applications is the 9th of November  
Interviews will be held on Friday 16th of November

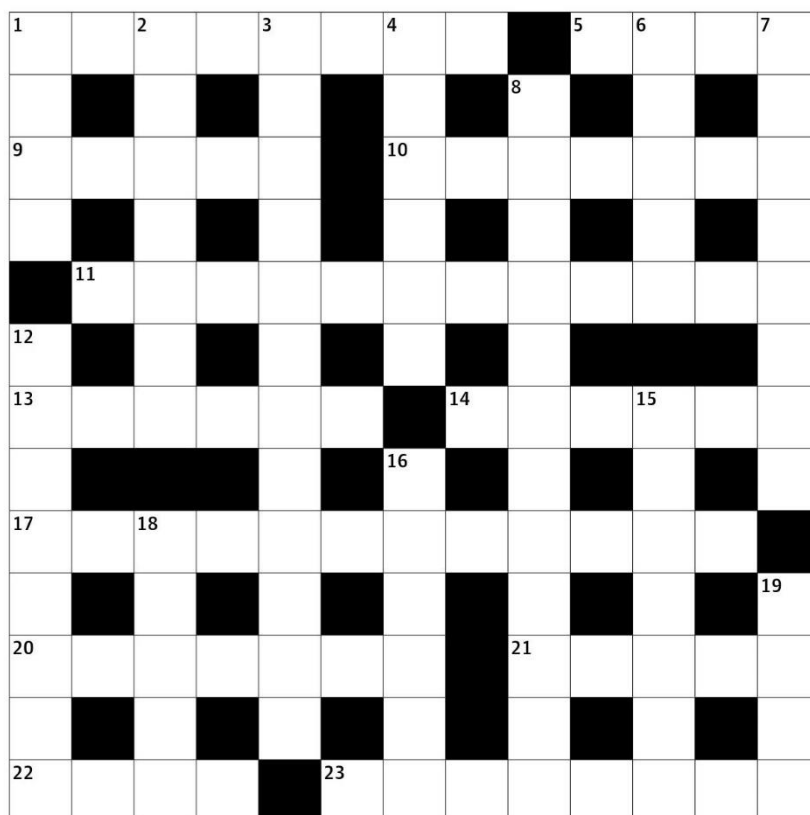


  
Prospects Trust  
AT SNAKEHALL FARM  
GROWING DIFFERENTLY SINCE 1989  
Swaffham Road, Reach,  
Cambridgeshire, CB25 0HZ

Registered Charity: 1048584 Co Ltd: 3087221 Organic Certified: UKF003870



## Crossword



### Across

- 1** Have the opposite and damaging effect to that intended (8)
- 5** (When citing a reference) in the same place (abbr) (4)
- 9** Popular dance music of the 1970s (5)
- 10** Thick sugar paste used for icing cakes (7)
- 11** Person in their sixties (12)
- 13** Orion – pocket watch with a hinged protective lid (6)
- 14** Nocturnal wild cat of Central and South America (6)
- 17** Noisily aggressive (12)
- 20** Rotary engine (7)
- 21** Wide – impenetrable (5)
- 22** Panache (4)
- 23** Log store (8)

### Down

- 1** Cots, bunks etc – eastern English county (abbr) (4)
- 2** Toilet water reservoir (7)
- 3** Soft fresh cheese, like thick yogurt (7,5)

- 4** Automatic action (6)

- 6** Indian dish consisting of vegetables deep fried in batter (5)
- 7** Explode (8)
- 8** Banged up (12)
- 12** Song thrush – short let (anag) (8)
- 15** Uncouth (7)
- 16** Swimming briefs trademark (6)
- 18** Middle East country, capital Damascus (5)
- 19** Slide out of control (4)



**Be part of our little village talent show. Join us for a fun evening of entertainment and show us your talents.**

**Hosted by the brand new mini events team, formed by the children of Reach.**

**On Saturday 2<sup>nd</sup> February 2019  
At Reach Village Hall, from 7:00.**

**Enter one of our age categories:**

- **KS1 and under**
- **KS2**
- **KS3 to 18**
- **18+**
- **Family and Friends**

**Please email:**

**[mini.reacheventsteam@gmail.com](mailto:mini.reacheventsteam@gmail.com) to sign up.**  
**Sign up before the 19<sup>th</sup> January to ensure your performance place.**

**Refreshments will be available on the night.**  
**All Proceeds will go to charities chosen by the children of Reach.**  
**If you want any more information please email us.**

**Extended GP opening hours in the evenings and at weekends.**

Find out more [www.openlater.co.uk](http://www.openlater.co.uk)

**OPEN**

**OPEN** later. **OPEN** longer.

### Evening and weekend appointments now available

We are now offering evening and weekend appointments with a GP or nurse as part of Extended GP Opening hours. These are for routine, non-urgent issues.

You can book your appointment through **our receptionist** who will give you a time, date and venue for your appointment.

Our receptionist will also be able to answer any questions you have about the service and how to cancel or change your booking.

If you would like to find out more please go to [www.openlater.co.uk](http://www.openlater.co.uk)



### What's on at The Dyke's End this Winter

#### Seniors 2 Course Lunch (Over 60's)

Every Tuesday & Wednesday  
12pm to 2pm

Choose a Main Meal and a Dessert  
**Just £9.50 per person**

#### Surf or Turf Fryday

Friday 6pm - 9pm

##### Surf

Haddock in Beer Batter, with Chips, Peas,  
Tartar sauce plus a 175ml glass of Wine  
**Just £15.50 per person**

##### Turf

Sirloin or Ribeye steak with Chips,  
Tomatoes, Mushrooms, Onion Rings  
plus a 175ml glass of Wine  
**Just £21.50 per person**

#### Pie and a Pint Night

(or a medium glass of wine)

Every Wednesday Evening from 6pm

**Just £12.50 per person**

#### Sunday Roasts

1 Course £15

2 Courses £18

3 Courses £20

We also offer Sandwiches and  
Dishes from our Standard Menu

The Dyke's End, 8 Fair Green, Reach, Cambridgeshire, CB25 0JD  
Tel: 01638 743816 Web: [www.dykesend.co.uk](http://www.dykesend.co.uk)



## Church Services at Burwell and Reach

December 2018	St Mary's Burwell	St Etheldreda's Reach
<b>Sunday 2<sup>nd</sup> Advent Sunday</b>	8.00 am Holy Communion 10.00am All Age Communion 4.30pm Christingle Service <i>(4.00pm Churches Together Songs of Praise at Ness Court)</i>	
Wednesday 5 <sup>th</sup>	10.00am Holy Communion 11.00am Holy Communion at Ash Grove	7.00pm Candlelit Night Prayer
Thursday 6 <sup>th</sup>	10.00am Little Bears	8.15am Morning Prayer
<b>Sunday 9<sup>th</sup> Advent 2</b>	10.00am Holy Communion 7.00pm Sunday @ 7	8.00am Holy Communion
Wednesday 12 <sup>th</sup>	10.30am Holy Communion	
Thursday 13 <sup>th</sup>		8.15am Morning Prayer
<b>Sunday 16<sup>th</sup> Advent 3</b>	8.00 am Holy Communion 10.00am All Age Service with Baptism 6.30pm Carols by Candlelight	
Wednesday 19 <sup>th</sup>	10.30am Holy Communion at Ness Court	
Thursday 20 <sup>th</sup>		8.15am Morning Prayer
<b>Sunday 23<sup>rd</sup> Advent 4</b>	8.00am Holy Communion 10.00am Holy Communion	5.00pm Christingle Service
Monday 24 <sup>th</sup> Christmas Eve	3.00pm Family Nativity and Carols 11.30pm Midnight Communion	
Tuesday 25 <sup>th</sup> Christmas Day	10.00am Christmas Morning Communion	8.00am Holy Communion
<b>Sunday 30<sup>th</sup> Sunday after Christmas</b>		10.00am Holy Communion
January 2019	St Mary's Burwell	St Etheldreda's Reach
Wednesday 2 <sup>nd</sup>	10.00am Holy Communion 11.00am Holy Communion at Ash Grove	
Thursday 3 <sup>rd</sup>		8.15am Morning Prayer
<b>Sunday 6<sup>th</sup> Epiphany 1</b>	8.00am Holy Communion 10.00am All Age Service with Baptism	
Wed 9 <sup>th</sup>	10.00am Holy Communion	
Thursday 10 <sup>th</sup>		8.15am Morning Prayer
<b>Sunday 13<sup>th</sup> Epiphany 2</b>	10.00am Holy Communion 7.00pm Sunday @ 7	8.00am Holy Communion
Wednesday 16 <sup>th</sup>	10.30am Holy Communion at Ness Court	
Thursday 17 <sup>th</sup>		8.15am Morning Prayer
<b>Sunday 20<sup>th</sup> Epiphany 3</b>	8.00am Holy Communion 10.30am Churches Together Service for Week of Prayer for Christian Unity at Burwell Baptist Church	
Wednesday 23 <sup>rd</sup>	10.00am Holy Communion	
Thursday 22 <sup>nd</sup>		8.15am Morning Prayer
<b>Sunday 27<sup>th</sup> Epiphany 4</b>	8.00am Holy Communion 10.00 Holy Communion 4.00pm Messy Church	
Wednesday 29 <sup>th</sup>	10.00am Holy Communion	
Thursday 30 <sup>th</sup>		8.15am Morning Prayer

## Bus Timetable

Reach is served by the Stagecoach number 11 bus service - summary of all buses serving Reach is shown below.

**Please note that there is no bus service at all on Sundays**

Cambridge to Bury - Monday to Friday (excluding Bank Holidays)				
Cambridge Drummer Street	Reach	Burwell Ness Road	Newmarket Bus Station	Bury Bus Station
06:50	07:35	07:45	08:17*	08:49
07:50	08:35	08:45	09:17*	09:49
09:50	10:35	10:45	11:17*	11:49
11:50	12:35	12:45	13:17*	13:49
13:50	14:35	14:45	15:17*	15:49
15:50	16:42	16:52	17:24	17:55
18:15	19:00	19:10		
19:15	20:00	20:10		

Cambridge to Bury - Saturdays (excluding Bank Holidays)				
Cambridge Drummer Street	Reach	Burwell Ness Road	Newmarket Bus Station	Bury Bus Station
06:50	07:35	07:45	08:17*	
07:50	08:35	08:45	09:17*	09:49
09:50	10:35	10:45	11:17*	11:49
11:50	12:35	12:45	13:17*	13:49
13:50	14:35	14:45	15:17*	15:49
15:50	16:35	16:52	17:17	17:55
18:15	19:00	19:10		
19:15	20:00	20:10		

Bury to Cambridge - Monday to Friday (excluding Bank Holidays)				
Bury Bus Station	Newmarket Bus Station	Burwell Ness Road	Reach	Cambridge Drummer Street
		06:14	06:29	07:22
		06:39	06:54	07:50
	08:40	09:08	09:23	10:13
10:05	10:35*	11:08	11:23	12:13
12:05	12:35*	13:08	13:23	14:13
14:05	14:35*	15:08	15:23	16:13
15:05	15:35*	16:08	16:23	17:13
16:05	16:35*	17:08	17:23	18:13
17:05	17:35*	18:08	18:23	19:13

Bury to Cambridge - Saturdays (excluding Bank Holidays)				
Bury Bus Station	Newmarket Bus Station	Burwell Ness Road	Reach	Cambridge Drummer Street
		06:19	06:34	07:22
		06:49	07:04	08:00
	08:40	09:08	09:23	10:13
10:05	10:35*	11:08	11:23	12:13
12:05	12:35*	13:08	13:23	14:13
14:05	14:35*	15:08	15:23	16:13
15:05	15:35*	16:08	16:23	17:13
16:05	16:35*	17:08	17:23	18:13
17:05	17:35*	18:08	18:23	19:13

\* These are arrival times, buses will depart approximately 5-7 minutes later

A full timetable can be downloaded from [www.reach-village.co.uk/bus\\_service.html](http://www.reach-village.co.uk/bus_service.html)

## Diary Dates

Dec	Event	Location	Time
Wednesday 5	Parish Council Meeting	Village Centre	7.30pm
Thursday 6	Recycling Day (Blue)		
Saturday 8	Burwell Farmers Market	Burwell	9.30am to 12.30pm
Saturday 8	Ely Farmers Market	Ely	8.30am – 2.00pm
Wednesday 12	Village Centre Committee Meeting	Village Centre	8.00pm
Thursday 13	Recycling Day (Green)		
Friday 14	Mobile Library – Route C12	Village Green	2.20pm
Thursday 20	Recycling Day (Blue)		
Saturday 22	Ely Farmers Market	Ely	8.30am – 2.00pm
Monday 24	Carols around the Christmas Tree	Fair Green	6.00pm – 7.00pm
Saturday 29	Recycling Day (Green)		

Jan	Event	Location	Time
Wednesday 2	Parish Council Meeting	Village Centre	7.30pm
Saturday 5	Recycling Day (Blue)		
Wednesday 9	Village Centre Committee Meeting	Village Centre	8.00pm
Friday 11	Recycling Day (Green)		
Friday 11	Mobile Library – Route C12	Village Green	2.20pm
Saturday 12	Burwell Farmers Market	Burwell	9.30am to 12.30pm
Saturday 12	Ely Farmers Market	Ely	8.30am to 2.00pm
Thursday 17	Recycling Day (Blue)		
Thursday 24	Recycling Day (Green)		
Saturday 26	Ely Farmers Market	Ely	8.30am to 2.00pm
Thursday 31	Recycling Day (Blue)		



---

## Then and Now (see opposite page for pictures)

---

Colin Washtell, my late grandfather, moved to Reach in the early 1950's undertaking the renovation of 'White Roses' and creating the home that became the centre of our family for nearly 30 years. He died suddenly in 1976 and the family moved from the village to Cambridge a few years later.

Amongst many other activities, he had a keen interest in local history, as many people in the village have today and collected many books, maps, newspaper cuttings and other ephemera of which I am now the custodian. Amongst these are a quantity of 35mm colour slides of Reach village life taken by him in the period around 1960.

We intend to digitise some of these and feature a 'then and now' series. I hope it is of interest and we would certainly welcome any additional information they may engender as well as any corrections to the comments we include.

The photo featured here was only made possible at the time due to the unfortunate lightning strike which devastated the village church in September 1958. Scaffolding which was erected to facilitate repairs enable a photograph to be taken from the church clock level looking approximately North-West across the lower green.

Tony Kohlman, with the use of a drone has (without structural damage to the church!) captured a recent image taken from a similar height and position. The bus shelters absence is notable as is the abundance of trees.

**Chris Patterson**

---

## Contact Information

---

<b>Parish Council – see “Know Your Parish Council”</b>			
<b>Village Centre</b>			
	Chair	Andrew Towers	742484
	Finance	Andrew Trump	743335
	Bookings	Grahame Radford	742814
<b>Marquee Bookings</b>		Andrew Hall	743737
<b>Church</b>			
	Vicar	Eleanor Williams	741262
	Reader in Training	Frances Leadon	741770
	Priest in Retirement	Reverend David King	742924
	Parochial Church Council Member	Pam King	742924
	Churchwarden at Burwell/Reach	Simon Rogers	741205
	Churchwarden at Burwell/Reach	Sarah Wingate	742498
<b>Emergencies</b>			
	Electricity (Eastern Electric)		0800 783 8838
	Police (Emergency)/(Non-Emergency)		999/101
	Water (Anglian Water)		08457 145145
<b>Doctors, Burwell</b>			
	Appointments and Emergencies		741234
	Enquiries		743602
	Community Nurses		742382
	Surgery Hours	Mon 8.30am to 6.00pm with extended hours on a Monday please phone the surgery for details	